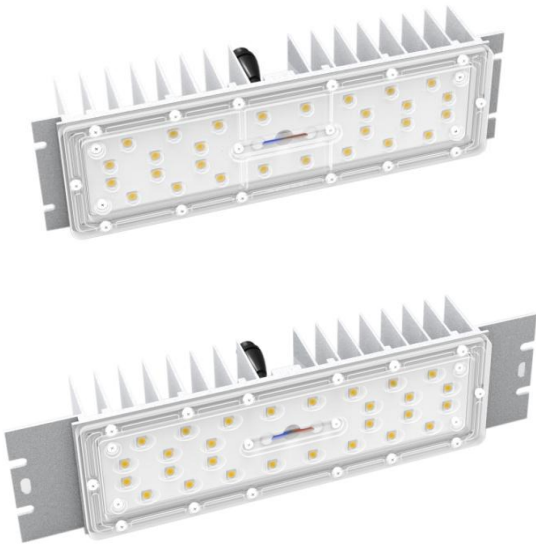




MS04 Series LED Module Specifications

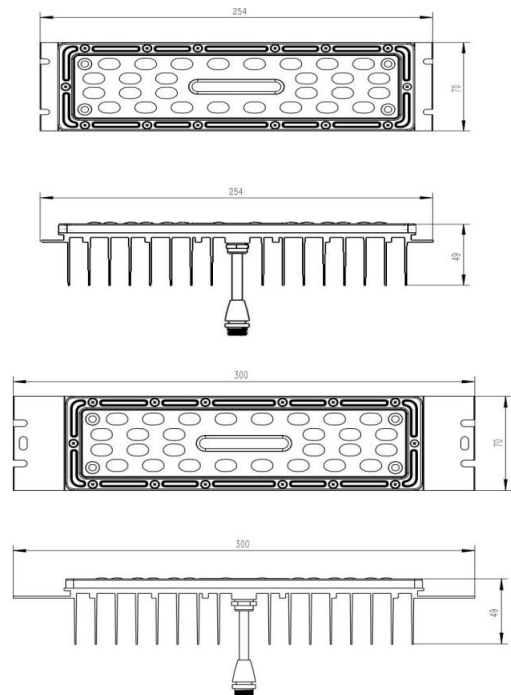


The LED module is developed by the SHINE OPTO R&D engineers team, according to the requirements and development of outdoor lighting market. It has many different optical designs with SHINE OPTO's proprietary technology, optimized the structure of heat radiation, can widely lower down the T_j , with very high luminous output. It also adopts standard electric connector, which can match customers' different requirements on housing designs, such as street lights, tunnel lights, spot/flood lights, high bay lights and etc.

Material

- 6063 aluminum alloy material by special processing, conductivity factor reached 245W/(M.K)
- Aluminium PCB board's thermal conductivity 2.0
- Rubber cable
- 304 Stainless steel screw
- High efficiency flux lenses
- Lumileds LUXEON 5050, warranty & life span > 50000hs

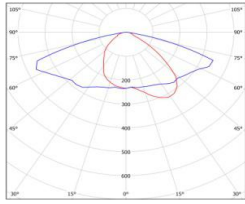
Size



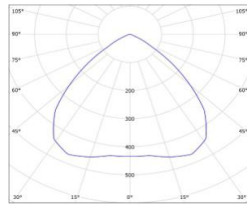
Main Features

- 6063 aluminum alloy material by special processing, conductivity factor reached 245W/(M.K), the T_j is less than 55°C after heat balance.
- The lens use calculus patented technology and Shine Opto special optical material, so that the optical efficiency of the lens can reach more than 99%.
- With the unique patent technology, it can avoid causing the difference of the optical effects from the Lens installation or the influence of the outdoor environment.
- Various of beam angle design, suitable for different lighting occasions.
- IP68 water proof, can working under water over 3m.
- Adopts standard electric connector, which can match different requirement on housing designs.
- The complete optical designs, can reach the lighting demand of the various optical applications.

Distribution Curve



Type II medium

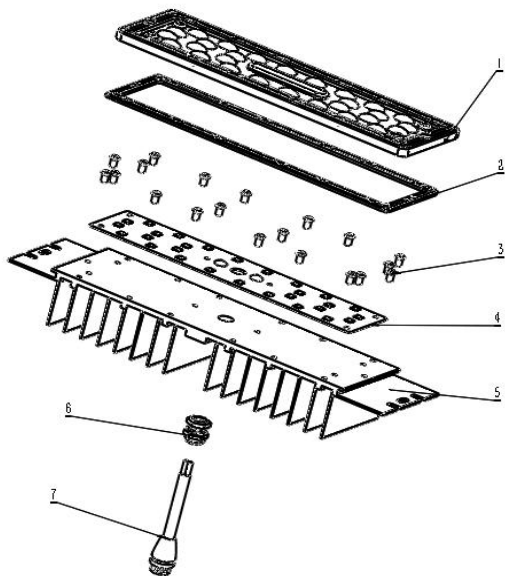


90°

Technical Parameters

Item	Power	LED	QTY	CCT	Flux of module	Current	IP	Size(mm)	NW
MS04A	30W	Lumileds LUXEON 5050	28	3000K	180lm/W	560mA	IP68	254*70*41.5	0.50Kg
	40W		28		175lm/W	750mA			
	50W		28	4000K	170lm/W	930mA			
MS04B	30W		28	5000K	180lm/W	625mA	IP68	300*70*41.5	0.52Kg
	40W		28	5700K	175lm/W	750mA			
	50W		28	170lm/W	930mA				

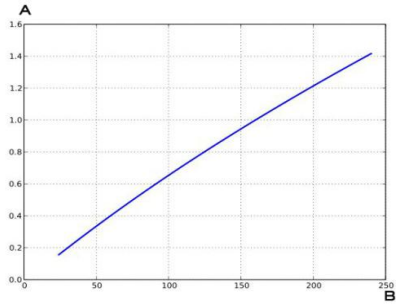
Break Up The Figure



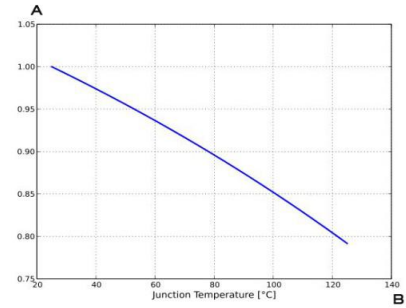
No.	Name	QTY
1	Lenses	1
2	Silicone gasket	1
3	Screws	20
4	Aluminium PCB with leds	1
5	Heatsink	1
6	Waterproof screw	1
7	DC Cable	1

Tj Flux Current Grapl

1,Based on Lumileds led module testing result.



A:Relative luminous flux B:Forward current



A:Relative luminous flux B: Tj

Note

- 1,The parameters for LED modules are all testing under the condition of RH 85%.
- 2,The tolerance of luminous flux, power and current value $< \pm 5\%$.
- 3,All the materials of module meet RoHS standard.
- 4,The design and parameter of this module meet UL, DLC, TUV, ENEC, VDE, CB, ERP and other demonstration requirements.
- 5,The design of this module used a number of SHINE patented technology, please do not fake.
- 6,Do not close to look at working leds directly.
- 7,The module warranty terms are based on the parameter working condition listed in this specifications.